

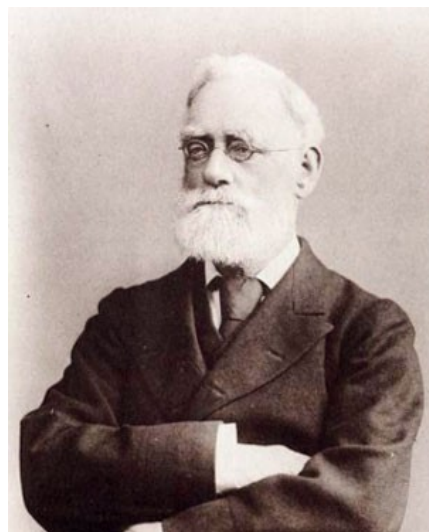
meiosis.org.uk

A small site that is interested in things
botanical and historical, associated with
the herbaria@home project

Bennett, Alfred William (1833 – 1902)

Posted on [May 23, 2011](#) by [Lewis](#)

Alfred William Bennett, MA FLS (24/6/1833 – 23/1/1902).



Alfred William Bennett was born in Clapham in 1833. William, his father was a successful businessman (tea dealer) and the family moved down to Brockham. William bred emus, and was a friend of Newham and the Doubledays.

Between 1851 – 54, Alfred, his brother Edward Trusted Bennett and his father William went a number of walking tours of Wales and other parts of the country; details of which may be found in various editions of 'The Phytologist'.

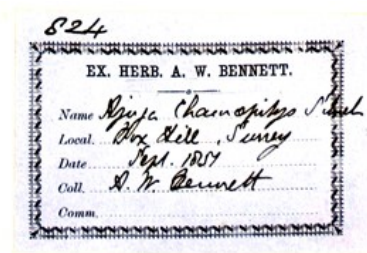
Alfred took a M.A.

degree at University College, London and went into publishing for some years. At about this time, he was proprietor and editor of 'The Friend' – a journal which recorded matters of interest to **The Society of Friends**.

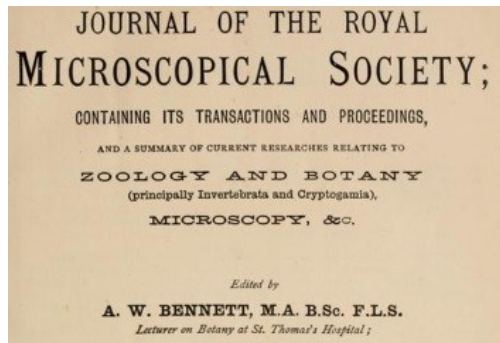
He was one of the first people to use photography in the illustration of books, and was one of the early sub-editors of the journal "Nature". Later, he lectured in botany at St Thomas' Hospital and Bedford College for many years, and translated various foreign works on botany e.g. Text-book of Structural and Physiological botany, [Otto Wilhelm Thomé](#) tr. and ed. by A.W. Bennett, and Sachs' Textbook of Botany in conjunction with Thistleton Dyer).

FLEMISH RELICS; ARCHITECTURAL, LEGENDARY, AND PICTORIAL. By F. G. STEPHENS. Illustrated with Photographs by Cundall and Fleming. **A. W. Bennett.** 1866.
 MAELMION. By Sir WALTER SCOTT. With Photographic Illustrations by Thomas Atkin. **A. W. Bennett.** 1866.
 THE BORDER: ITS ABBEYS AND CASTLES. With Photographic Illustrations by Wilson and Thompson. **A. W. Bennett.** 1865.
 THE RUINED ABBEYS OF YORKSHIRE. By W. HOWITT. With Photographic Illustrations by Sedgfield and Ogle. **A. W. Bennett.** 1865.

He had a particular interest in alpine plants and the pollination and fertilisation of plants, for example writing papers on protandry and protogyny (*J of Bot*, vol viii, p.315). This area of his work brought him into contact with Charles Darwin. In 1875, he went on a walking tour in Switzerland with [J G Baker](#).



He was elected a Fellow of the Linnean Society in 1868 and served on the Council of that Society. He was a



He died from heart disease in 1902 and was buried at the Friends' cemetery at Isleworth.

Information from :

- <http://www.nature.com/nature/journal/v65/n1684/abs/065321a0.html> and
- <http://www.archive.org/stream/journalofroyalmi1902roya#page/156/mode/2up/search/Bennett>

Related posts:

1. **Bennett, Arthur (1843-1929)** Arthur Bennett was an enthusiastic botanist. Inspection of various sheets at the...
2. **Brady, Henry Bowman (1835-1891)** Henry Bowman Brady was born in Gateshead in February 1835. His father...
3. **Baker, John Gilbert F.R.S., F.L.S (1834-1920).** John G Baker * was born in Guisborough. He attended Bootham...

This entry was posted in [Quaker Botanists](#) and tagged [alpine](#), [Darwin](#), [J G Baker](#), [Microscopical Society](#), [quaker](#), [Switzerland](#). Bookmark the [permalink](#).

meiosis.org.uk

Proudly powered by [WordPress](#).

This site uses cookies [More info](#)

No problem